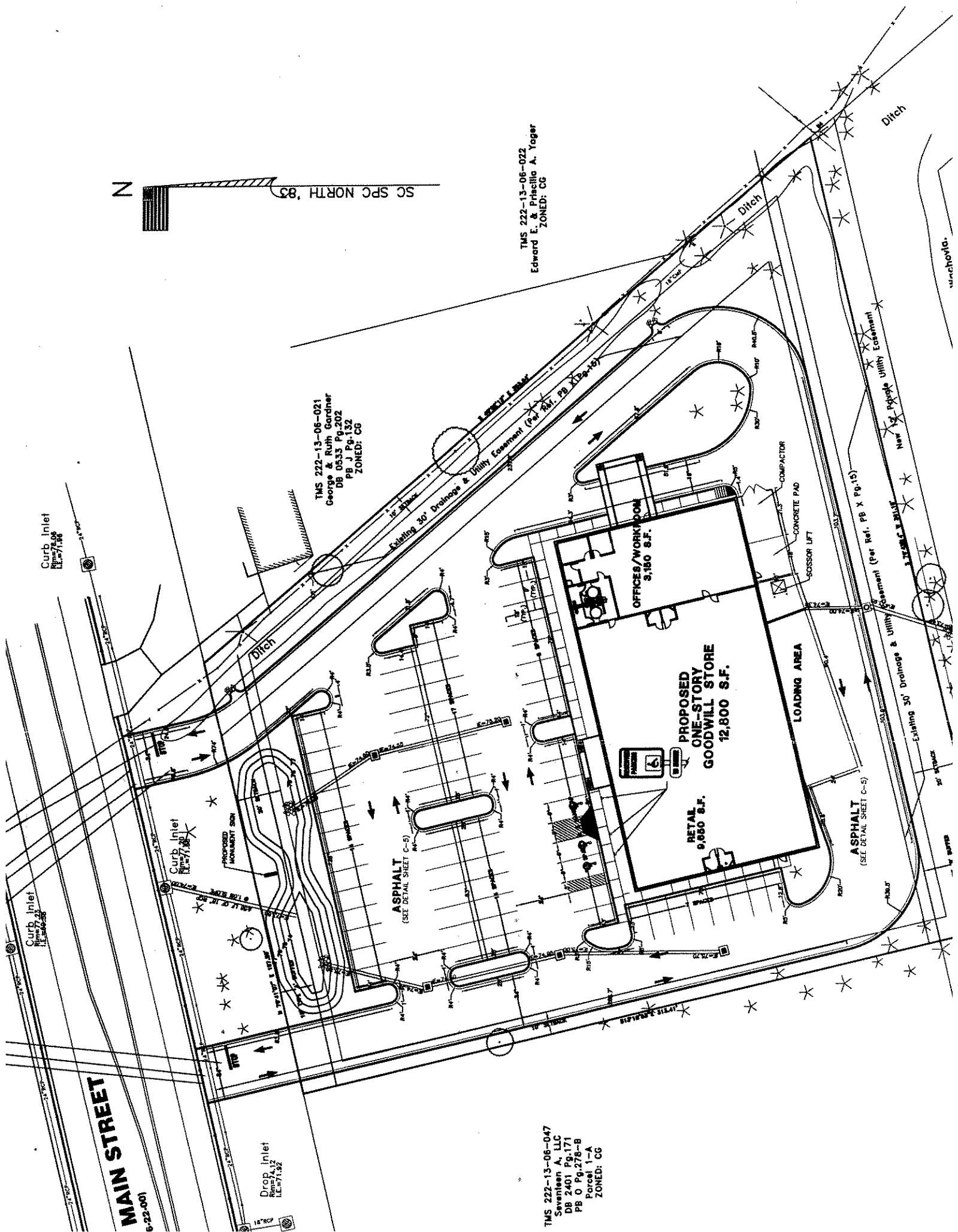


SC SPC NORTH '83

TMS 222-13-08-022  
Edward E. & Priscilla A. Tager  
ZONED: CG

TMS 222-13-08-021  
George & Ruth Gardner  
DB 0533 Pg.202  
PB J Pg.132  
ZONED: CG

TMS 222-13-06-047  
Seventeen A, LLC  
DB 2401 Pg.171  
PB O Pg.278-B  
Parcel 1-A  
ZONED: CG



**MAIN STREET**  
6-22-001

Drop Inlet  
E.L.#7132

Curb Inlet  
E.L.#7132

Curb Inlet  
E.L.#7132

ASPHALT  
(SEE DETAIL SHEET C-5)

ASPHALT  
(SEE DETAIL SHEET C-5)

PROPOSED  
ONE-STORY  
GOODWILL STORE  
12,800 S.F.

OFFICES/WORKROOM  
3,180 S.F.

LOADING AREA

SCISSOR LIFT  
CONCRETE PAD  
COMPACTOR

Existing 30' Drainage & Utility  
Easement (Per Ref. PB X Pg.15)

New 3' Pipe Utility Easement

Ditch

unachofa.