

**SITE DATA:**

Current Zoning Highway Commercial (HC)  
 TMS Number 163-00-01-185 (Lot 18, Ph 3B Forest Sq.)  
 Project Site Area ±1.78 acres

Impervious Area ±1.31 acres (74%)  
 Building / Loading Dock ±0.43 acres  
 Parking / Drive Isles ±0.88 acres

Pervious Area ±0.47 acres

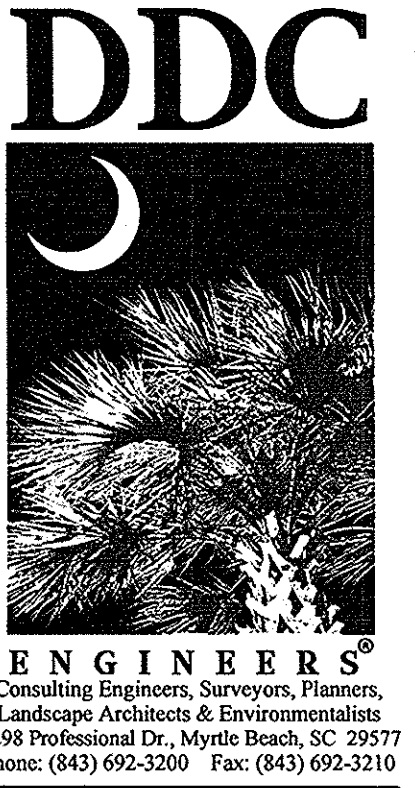
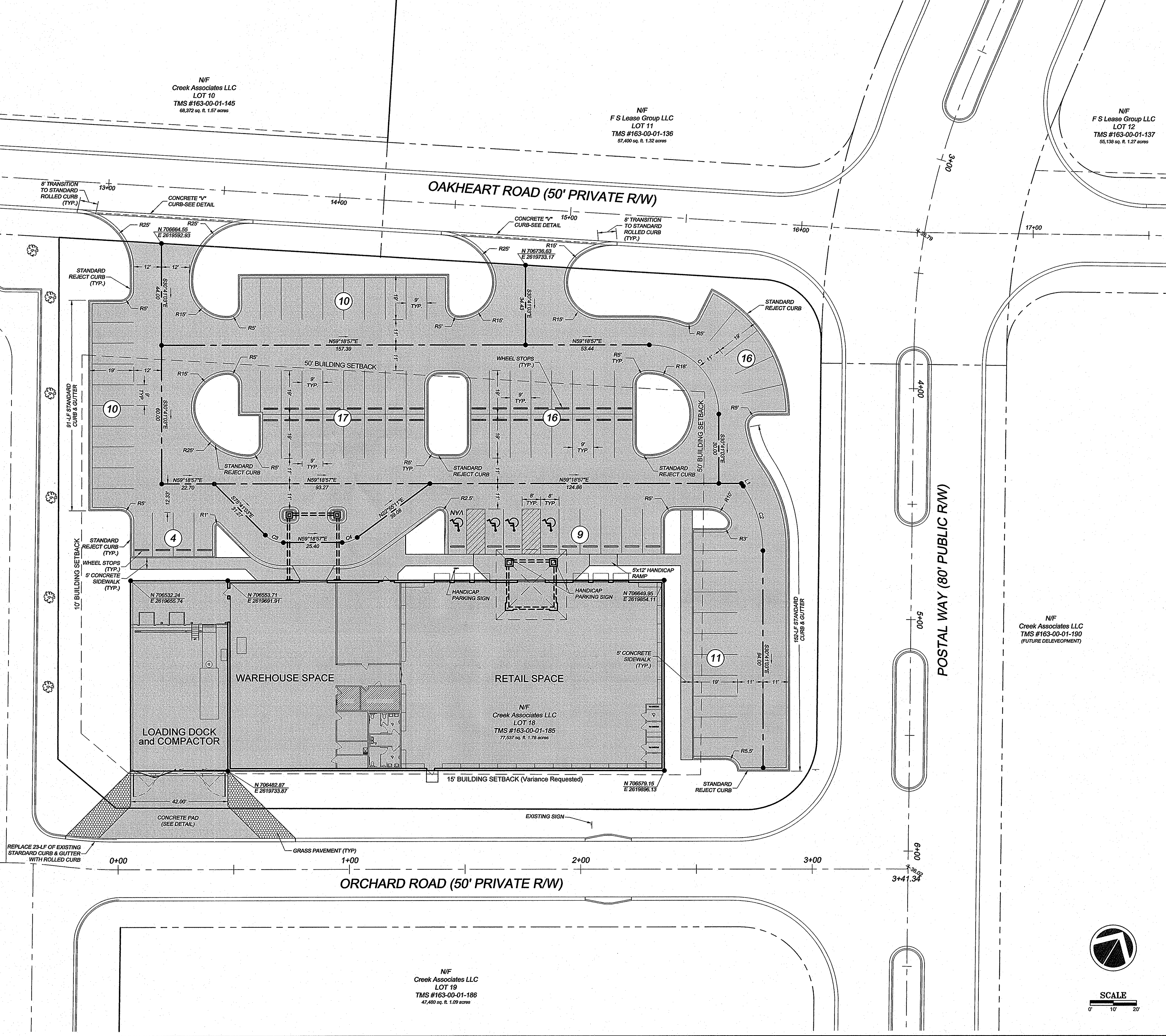
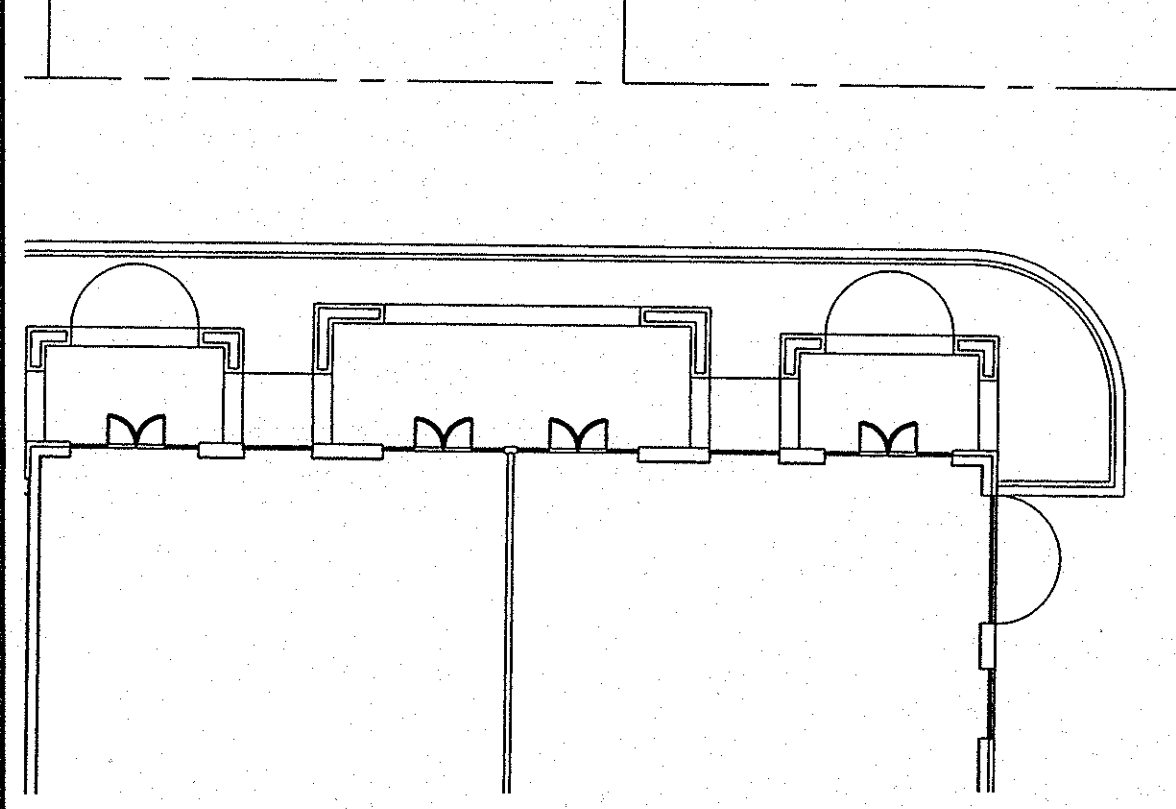
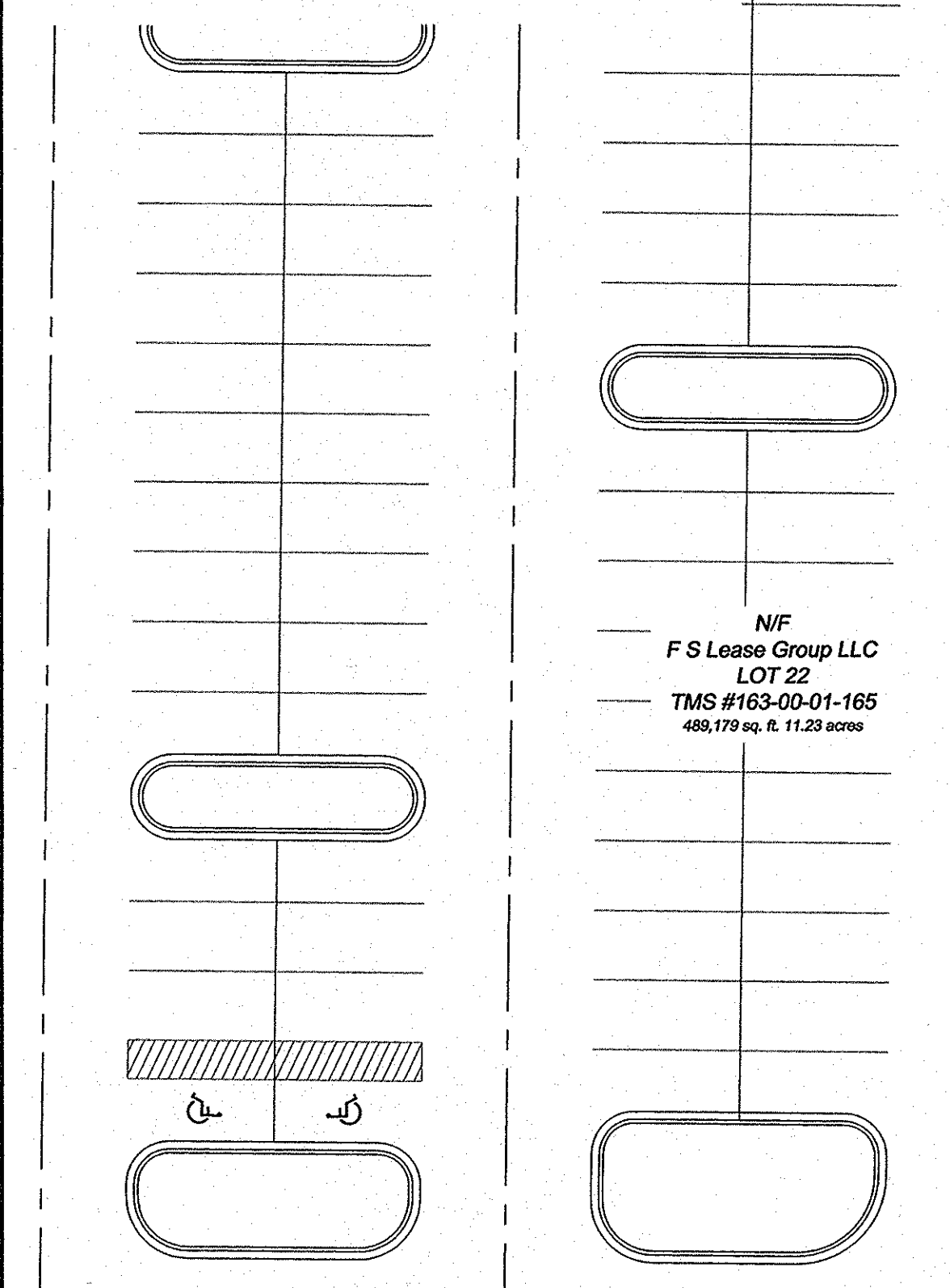
**Parking Requirements**  
 (1 space per 300sf)  
 15,534 sf floor space / 300sf = 52 spaces required  
 Spaces Provided = 82 spaces provided (4 Handicap spaces)

**Building Setbacks**  
 Front 50'  
 Side 10'  
 Corner Side 15'  
 Rear 15'  
 Perimeter Landscape Buffer 5'

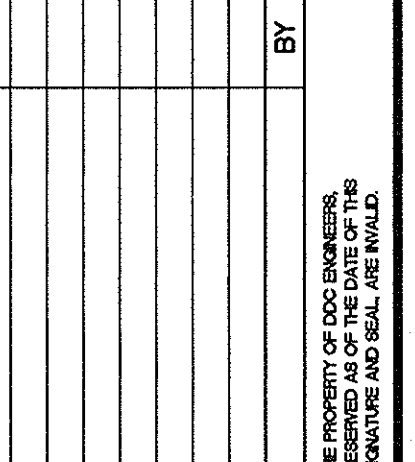
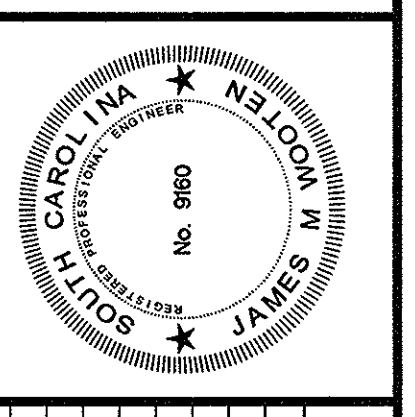
**Utility Data**  
 Water and Wastewater services for Lot 18 are provided per the Forest Square Development owned and maintained by GSWSA.  
 Stormwater Treatment for Lot 18 complies with the Approved Master Stormwater Plan for the Forest Square Development. All stormwater will be collected onsite and routed to the nearest catch basin provided and treated in the existing stormwater pond located within the Forest Square Development.  
 Onsite lighting will be designed and provided by Santee Cooper in compliance with the Forest Square Development POA and Horry County Ordinance.

| Curve | Length | Radius | Tangent | Bearing     | Chord | Delta     |
|-------|--------|--------|---------|-------------|-------|-----------|
| C1    | 47.12  | 30.00  | 30.00   | N75°41'03"W | 42.43 | 90°00'00" |
| C2    | 29.47  | 50.00  | 15.18   | N47°34'14"W | 28.05 | 33°46'23" |
| C3    | 8.64   | 11.00  | 4.56    | N81°48'57"E | 8.42  | 45°00'00" |
| C4    | 6.99   | 11.00  | 3.62    | N41°07'04"E | 6.87  | 36°23'46" |

| LINE | LENGTH | BEARING     |
|------|--------|-------------|
| L1   | 1.45   | S64°27'25"E |



**ENGINEERS**  
 Consulting Engineers, Surveyors, Planners,  
 Landscape Architects & Environmentalists  
 1298 Professional Dr., Myrtle Beach, SC 29577  
 Phone: (843) 692-3200 Fax: (843) 692-3210



| NO. | DATE | REVISION DESCRIPTION | BY |
|-----|------|----------------------|----|
|     |      |                      |    |

**HORIZONTAL CONTROL PLAN**  
**LOT 18 at FOREST SQUARE DEVELOPMENT**  
 HORRY COUNTY, SOUTH CAROLINA  
 PREPARED FOR: PIEDMONT COMPANIES INCORPORATED

SCALE: 1" = 20'  
 DATE: JUNE 3, 2011  
 DESIGNED BY: JTW  
 DRAWN BY: MJK  
 APPROV. BY: JMW  
 PROJECT NO: 111501 E  
 2  
 FILE NO: 11501-HCP.dwg