

SITE DATA

CURRENT ZONING	-	GC (GENERAL COMMERCIAL)
FLOOD ZONE	-	X
ONSITE SOILS	-	SAND / FINE SAND
OVERLAY DISTRICT	-	CCO / HIGHWAY 17 BUSINESS
ZIP CODE	-	29576
MIN. % PERVIOUS	-	30%
MIN. LOT SQ. FT.	-	10,000sf

SETBACKS

FRONT	-	50' (90' HWY 17 BUSINESS OVERLAY)
SIDE	-	10'
REAR	-	15'
MAX. BLDG HEIGHT	-	35'

PARKING CALCULATIONS

REQUIRED PARKING	-	1 SPACE PER 450 GROSS SQ. FT. = 34 SPACES
PARKING PROVIDED	-	59 SPACE (INCLUDES 3 HANDICAP SPACES)
25% OF THE PARKING SURFACE AREA MUST BE OF A PERVIOUS MATERIAL		

UTILITIES

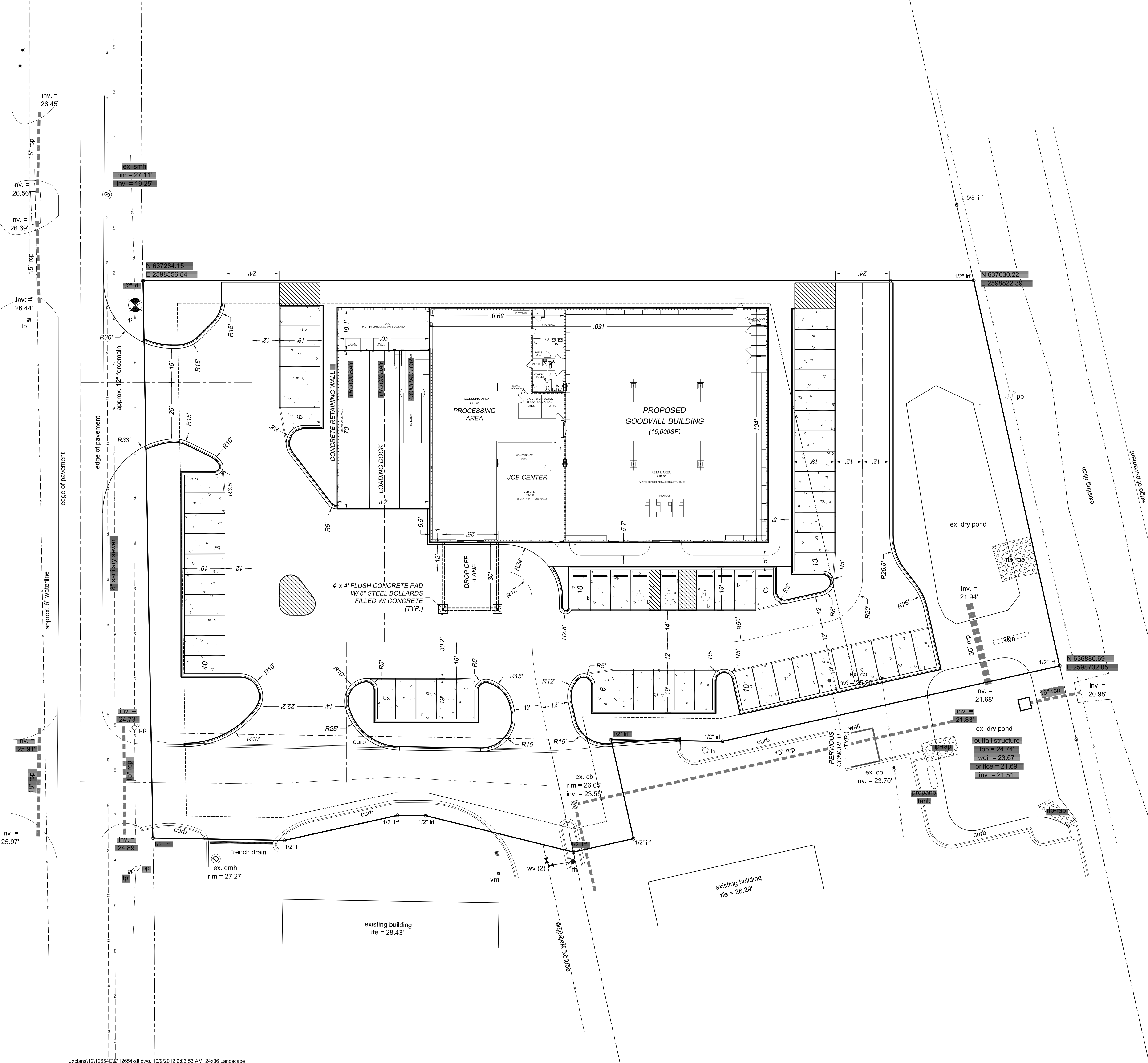
STORMWATER	-	GEORGETOWN COUNTY IS MS4
WATER / SEWER	-	GEORGETOWN COUNTY WASTER / SEWER DISTRICT
CABLE / PHONE	-	HTC AND/OR TIME WARNER
ELECTRIC	-	SANTEE COOPER
FIRE	-	MURRELLS INLET GARDEN CITY FIRE

IMPERVIOUS AREA CALCULATIONS

SITE AREA	=	85,098.9 sf (1.95ac)
BUILDING AREA	-	15,600 sf
LOADING DOCK AREA	-	3,656 sf
SIDEWALK AREA	-	1,358 sf
EXISTING DRIVE-WAY	-	7,219 sf
SURFACE PARKING AREA	-	36,245 sf
PERVIOUS PARKING SURFACE	-	-9,563 sf (26.4% of Surface Area)
TOTAL IMPERVIOUS AREA	=	54,515 sf (1.25ac) ≈ 64.1%

INTERIOR LANDSCAPE AREA

INTERIOR LANDSCAPE AREA	-	5,484 sf (15.1% of Surface Area)
OPEN SPACE AREA	-	15,537 sf
PERVIOUS PARKING SURFACE	-	9,563 sf (26.4% of Surface Area)
TOTAL PERVIOUS AREA	=	30,584 sf (0.70ac) ≈ 35.9%



CONCEPTUAL LAYOUT #5
 OCTOBER 9, 2012
 SCALE: 1" = 20'