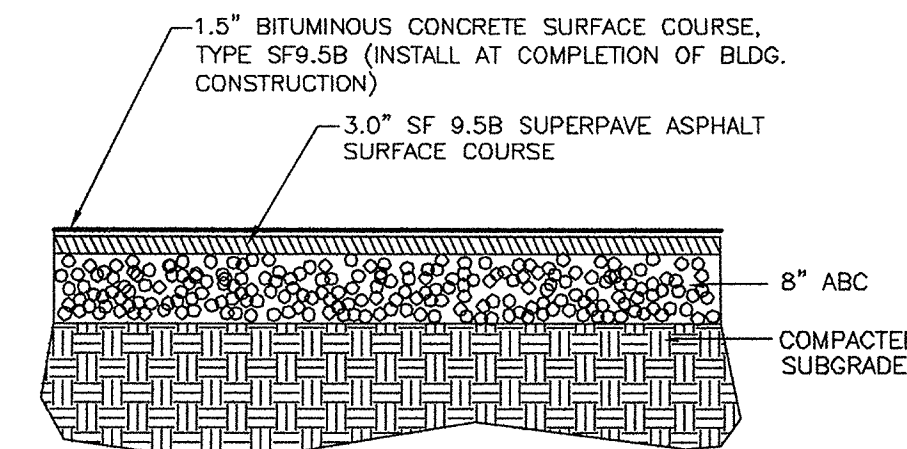
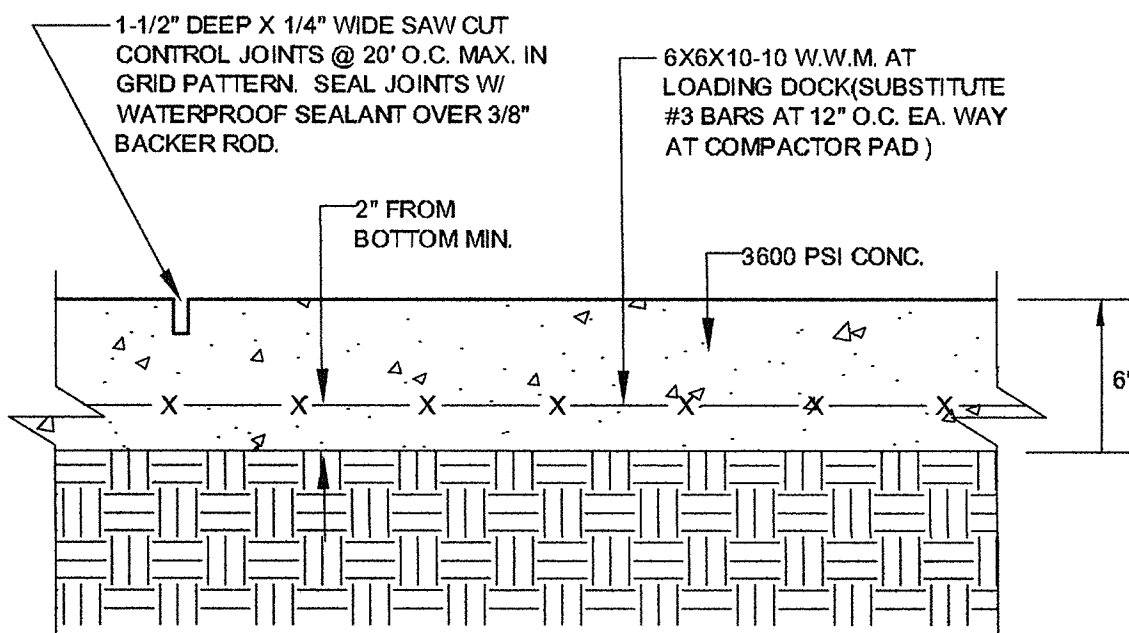


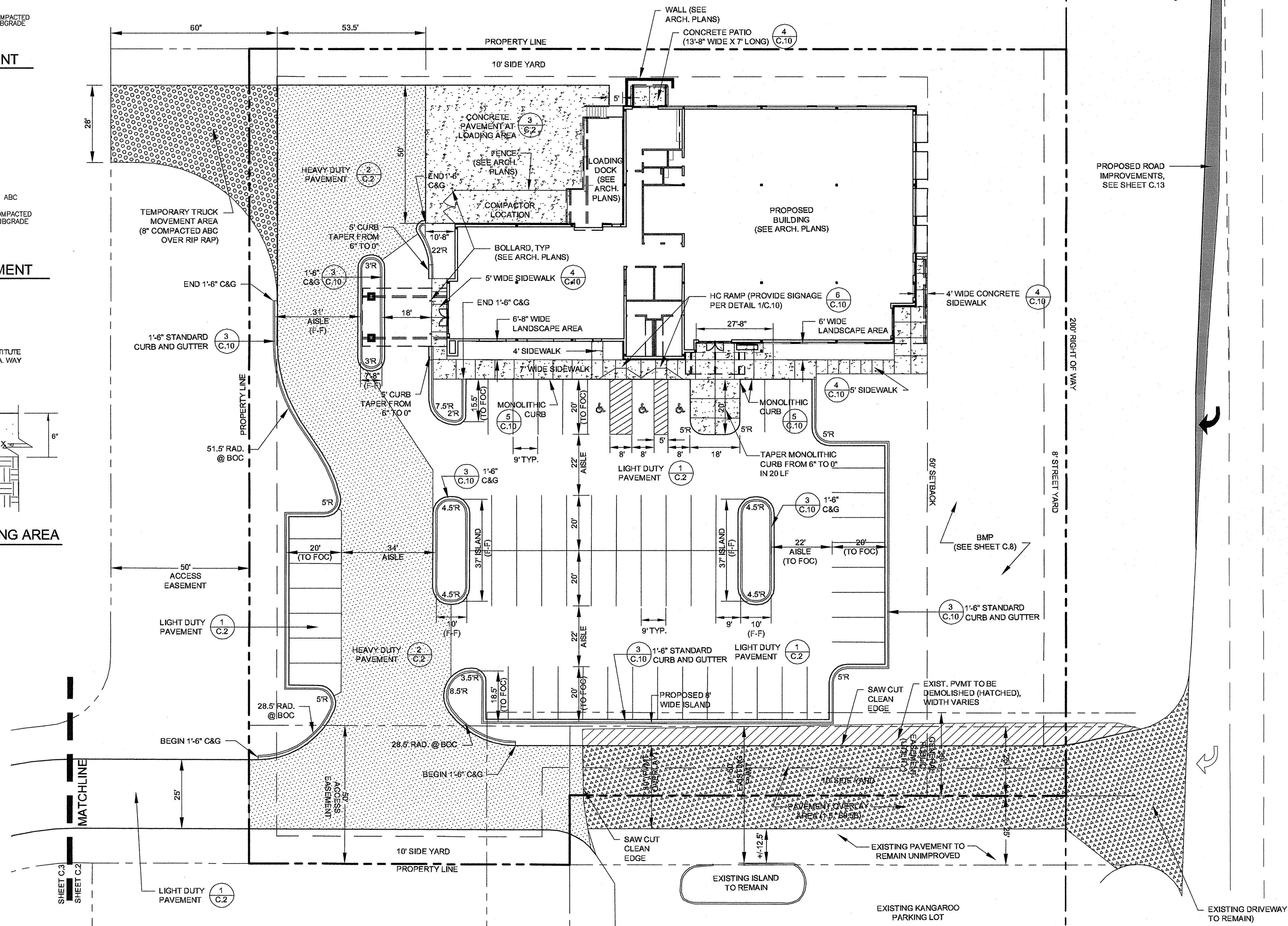
1 LIGHT DUTY ASPHALT PAVEMENT
SCALE: NTS



2 HEAVY DUTY ASPHALT PAVEMENT
SCALE: NTS



3 CONCRETE PAVEMENT AT LOADING AREA
SCALE: NTS



PAVEMENT LEGEND

	CONCRETE PAVING
	HEAVY DUTY PAVEMENT
	TEMPORARY GRAVEL
	PAVEMENT OVERLAY AREA (1.5" S9.5B)
	EXISTING PAVEMENT TO BE DEMOLISHED

- SITE NOTES**
- SEE SHEET FOR ACCESSIBLE CURB RAMP AND SIGNAGE.
 - ALL STREET SIGNAGE SHALL CONFORM TO NCDOT STANDARDS.
 - PARKING SPACES SHALL BE 9.0' WIDE X 20.0' LONG MINIMUM, UNLESS NOTED OTHERWISE; ACCESSIBLE PARKING SPACES SHALL BE 8.0' WIDE. SPACES AT END OF ROWS ARE MEASURED TO FACE OF CURB (9' WIDE MEASURED FROM PARKING STRIPE TO FACE OF CURB).
 - DIMENSIONS ARE TO FACE OF CURB TYPICAL, UNLESS NOTED OTHERWISE.
 - RADIUS LABELS INDICATE RADIUS AT BACK OF CURB
 - CONTACT THE UTILITY COMPANY TO RELOCATE ANY EXISTING UTILITY POLES.
 - SEE SHEET C.9 FOR IRRIGATION SLEEVE LOCATIONS

SITE DATA

GENERAL INFORMATION

PROJECT NAME: GOODWILL RETAIL STORE

TAX PARCEL #: 093-36-006 (OVERALL TRACT, NEW # PENDING)

OWNER: PIEDMONT COMPANIES, INC
2667 E. MAIN ST., LINCOLNTON NC, 28092
PH. 704-736-4330 FAX #: 704-736-4385

EXISTING ZONING: GB (GENERAL BUSINESS)

JURISDICTION: CITY OF MONROE, NORTH CAROLINA

PROPOSED USES: COMMERCIAL

SITE AREA: 1.89 ACRES

FEMA PANEL #: NA

PARKING REQUIREMENTS:

PARKING: 63 SPACES PROVIDED
(1 SPACE / 180 SF +/-)

LANDSCAPE SCREENING, OPEN SPACE:

SEE LANDSCAPE PLAN (SHEET C.7) FOR REQUIRED LANDSCAPING AND SCREENING

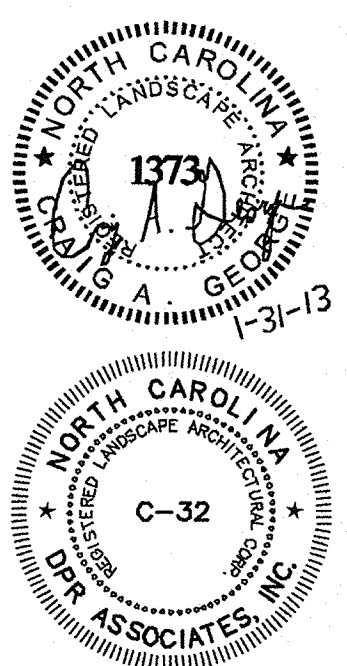
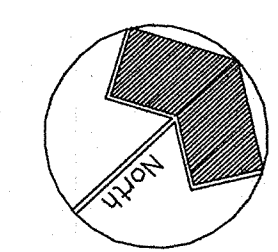
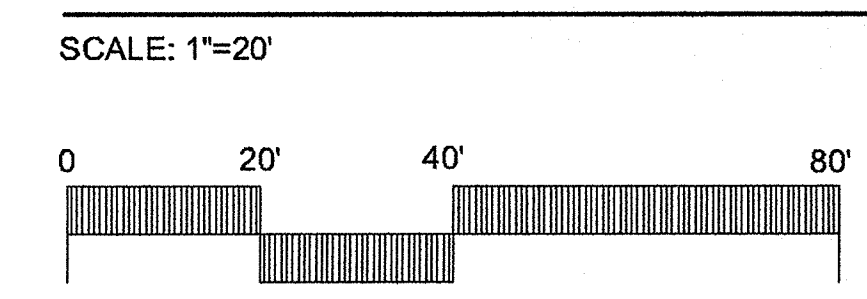
MINIMUM SETBACK: 50' (ALONG ROOSEVELT BOULEVARD)

MINIMUM SIDE YARD: 10'

MINIMUM REAR YARD: 10'

MAXIMUM BUILDING HEIGHT: 50'

SITE PLAN



US HIGHWAY 74
1000 SHELBY TOWN CENTER
200 PUBLIC RIGHT-OF-WAY
PC 5, PG. 82
DB, 5813 PG. 314
150 PUBLIC RIGHT-OF-WAY
PC, C, PAGE 425

222 N. LAFAYETTE ST., SUITE 21
SHELBY, NORTH CAROLINA 28150
ph. (704) 487-8578
fax (704) 487-8579

AIA

WWW.H-HARCHITECTS.COM

**HOLLAND
HAMRICK**

ARCHITECTS, P.A.

PROJECT TITLE
GOODWILL RETAIL STORE

MONROE, North Carolina