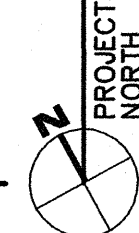


**FLOOR PLAN**  
1/8" = 1'-0"



**PLAN NOTES**

- 1 CASH WRAP BY OWNER. COORDINATE ALL RELATED FIXTURES & DEVICES
- 2 MILL FINISHED ALUM. HEIGHT GUARD CLEARANCE POST (POST GUARD) WITH MOUNTING PLATE, ANCHOR ASSEMBLY & ALERT BAR (4.5"X80"). PROVIDE 18" CONC. BASE W/(4)#6 BARS VERT. & #3 TIES @ 12" O.C. CHAMFER TOP 3/4" @ 45°.
- 3 FIXED LADDER WITH 30"X36" ROOF ACCESS HATCH. SEE DETAIL 9/A6.1. SEE SPECS.
- 4 COMPUTER KIOSK & TIME CLOCK BY OWNER. G.C. TO COORDINATE BLOCKING & UTILITIES.
- 5 KM7230 DOCK LEVELER W/INTEGRAL BUMPERS BY KELLEY DOCK SYSTEMS. EQUALS BY BLUE GIANT, W.B. MCGUIRE & RITE HITE.
- 6 4"X3'-6" HIGH STEEL PIPE W/6"X14" BASE PLATE W/(5) EMBED STUDS. PROVIDE REMOVABLE CHAIN BETWEEN ALL PIPES.
- 7 VENDING MACHINES BY OWNER. G.C. TO COORDINATE UTILITIES.
- 8 8'-0" HIGH TREILAGE SCREEN BY GREEN SCREEN.
- 9 DRESSING BENCH. SEE ELEVATION 2/A8.1.
- 10 METAL LOCKERS BY OWNER. G.C. TO COORDINATE BLOCKING.
- 11 4'-0"X4'-0" FCM CURB MOUNTED SKYLIGHT BY VELUX (ABOVE) W/CLEAR OVER WHITE INSULATED, LOW-E GLAZING, EQUALS BY: ANDERSON, BRISTOL FIBERLITE INDUSTRIES, EXARC, NATURALITE & SUNGLO.
- 12 8'-0" VINYL COATED CHAIN LINK FENCE W/12'-0" GATE. SEE SPEC.
- 13 TRASH RECEPTACLE, MODEL TR-12 BY FAIRWEATHER. (SEMI-GLOSS BLACK)
- 14 BENCH, MODEL PL-3, PLAZA SERIES BY FAIRWEATHER. (SEMI-GLOSS BLACK) (1/2" THK. PICKETS)
- 15 BOLLARD. SEE DET. 12/A6.1
- 16 LONG-TERM BICYCLE STORAGE HANGER, MODEL # 01195 (HOME DEPOT).

**GENERAL PLAN NOTES:**

- \* SEE SHEET A1.2 FOR GENERAL PROJECT NOTES.
- 1. DOOR JAMBS TO BE 4" OFF ADJACENT WALL OR CENTERED IN ROOM TYP. U.N.O. (STEEL STUD WALLS)
- 2. EXTERIOR WALL DIMENSIONS ARE FROM THE EXTERIOR FACE OF THE MASONRY VENEER OR ETIS TO THE INTERIOR FACE OF THE GYPSUM BD. (U.N.O.)
- 3. INTERIOR PLAN DIMENSIONS ARE FROM THE CENTER OF STEEL STUD WALL (U.N.O.)
- 4. INSTALL SOUND ATTENUATION INSULATION FULL HEIGHT OF ALL INTERIOR STEEL STUD WALLS IN RESTROOMS.
- 5. PROVIDE 3/4" IMPACT RESISTANT GYPSUM BD. TO +8'-0" A.F.F. & (2) 2X8 WALL PROTECTION ON ALL WALLS IN RECEIVING 104. SEE DET. 1/01.3. 3/4" GYPSUM BD. TO CONTINUE TO STRUCTURE ABV.
- 6. PROVIDE 3/4" PLYWOOD TO 8'-0" A.F.F. IN ELECTRICAL 112 & DATA 114. 3/4" GYPSUM BD. TO CONTINUE TO CEILING ABV.
- 7. PAINT ALL EXTERIOR EXPOSED STEEL W/ EPOXY PAINT (COLOR AS SELECTED BY ARCHITECT).
- 8. SEE DETAIL 10/A6.1 FOR TYP. GYP. BD. CONTROL JT.
- 9. PROVIDE MASONRY CONTROL JOINTS (MCJ) AS SHOWN ON PLANS. SEE DETAIL 11/A6.1.
- 10. PROVIDE WATER RESISTANT GYP. BD. ON ALL STEEL STUD WALLS IN AREAS WITH SINKS OR TOILETS.
- 11. ALL APPLIANCES ARE FURNISHED B.O. & INSTALLED BY G.C.
- 12. ALL EXTERIOR RAILINGS TO BE POWDER COATED ALUMINUM. (3/8" THK. POSTS & RAILS) (1/2" THK. PICKETS)
- 13. EXIT LIGHTS TO BE CENTERED WITH DOORS. COORDINATE LIGHT GAUGE STUD SPACING ACCORDINGLY.

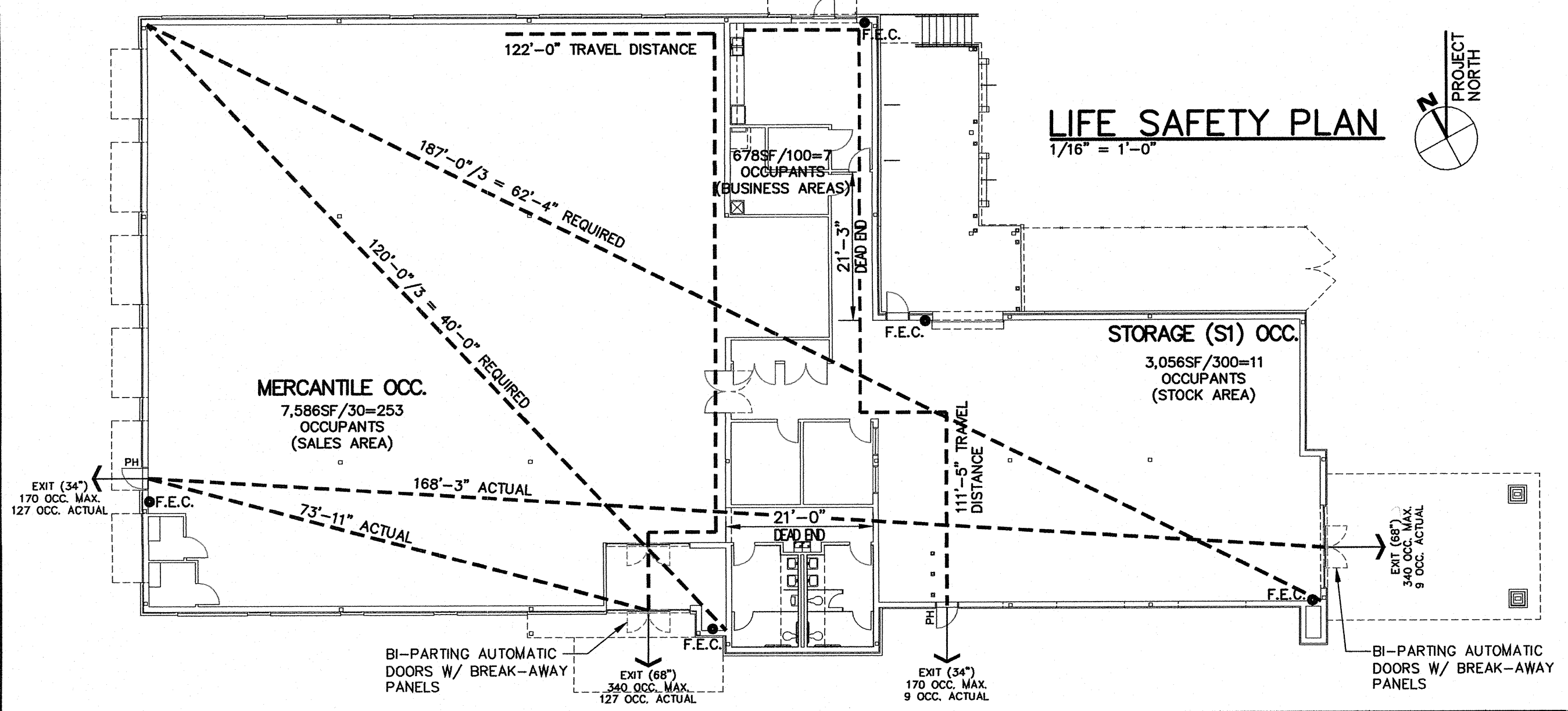
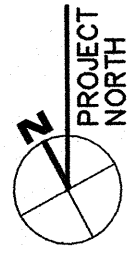
**LIFE SAFETY LEGEND**

- F.E.C. FIRE EXTINGUISHER & CABINET.
- EXIT (WIDTH) OCC. LOAD MAX. OCC. LOAD ACTUAL
- DOOR(S) W/PANIC HARDWARE

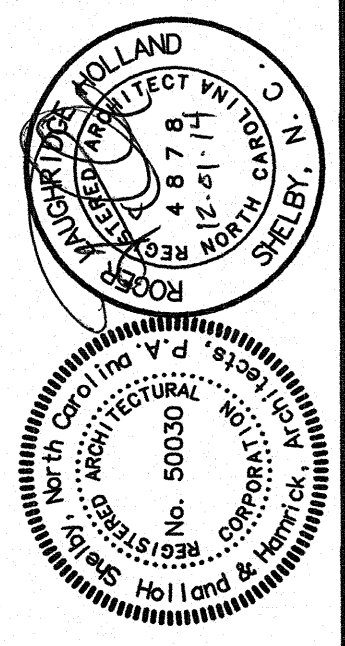
**FLOOR PLAN LEGEND**

- LINE INDICATES AREAS W/BRICK BELOW.
- 8"x20GA. STEEL STUDS @ 16" O.C. W/3/4" GYPSUM BD. (INTERIOR), 3/4" EXTERIOR GYPSUM SHEATHING (EXTERIOR) & 2" EIFS SYSTEM. (1114")
- 8"x20GA. STEEL STUDS @ 16" O.C. W/3/4" GYPSUM BD. (INTERIOR), 3/4" EXTERIOR GYPSUM SHEATHING (EXTERIOR) & 4" PAINTED SPLIT FACE CMU VENEER. (1'-2 3/4")
- 8"x20GA. STEEL STUDS @ 16" O.C. W/3/4" GYPSUM BD. (INTERIOR), 3/4" EXTERIOR GYPSUM SHEATHING (EXTERIOR) & 4" MODULAR BRICK VENEER. (1'-2 3/4")
- 3 3/8"x20GA. STEEL STUDS @ 16" O.C. W/ 3/4" GYP. BD. EACH SIDE. SEE DETAIL 1/A6.1
- 8"x20GA. STEEL STUDS @ 16" O.C. W/ 3/4" GYP. BD. EACH SIDE. SEE DETAIL 2/A6.1

**LIFE SAFETY PLAN**  
1/16" = 1'-0"



CONSULTANT



222 N. LAFAYETTE ST., SUITE 21  
SHELBY, NORTH CAROLINA 28150  
ph. (704) 487-8878  
fax (704) 487-8878  
WWW.H-HARCHITECTS.COM

**HOLLAND  
HAMRICK  
ARCHITECTS, P.A.**

**GOODWILL  
RETAIL STORE  
(IKEA)**  
Charlotte, North Carolina

COM. NO. 2025  
DATE 12-1-14  
REVISION SHEET  
**A1.1**  
2 OF 15